

PART OF THE NW 1/4 OF SECTION 26, T.7N., R.1E., S.L.B. & M.
TRAPPERS RIDGE AT WOLF CREEK PRUD PH. 2

IN WEBER COUNTY

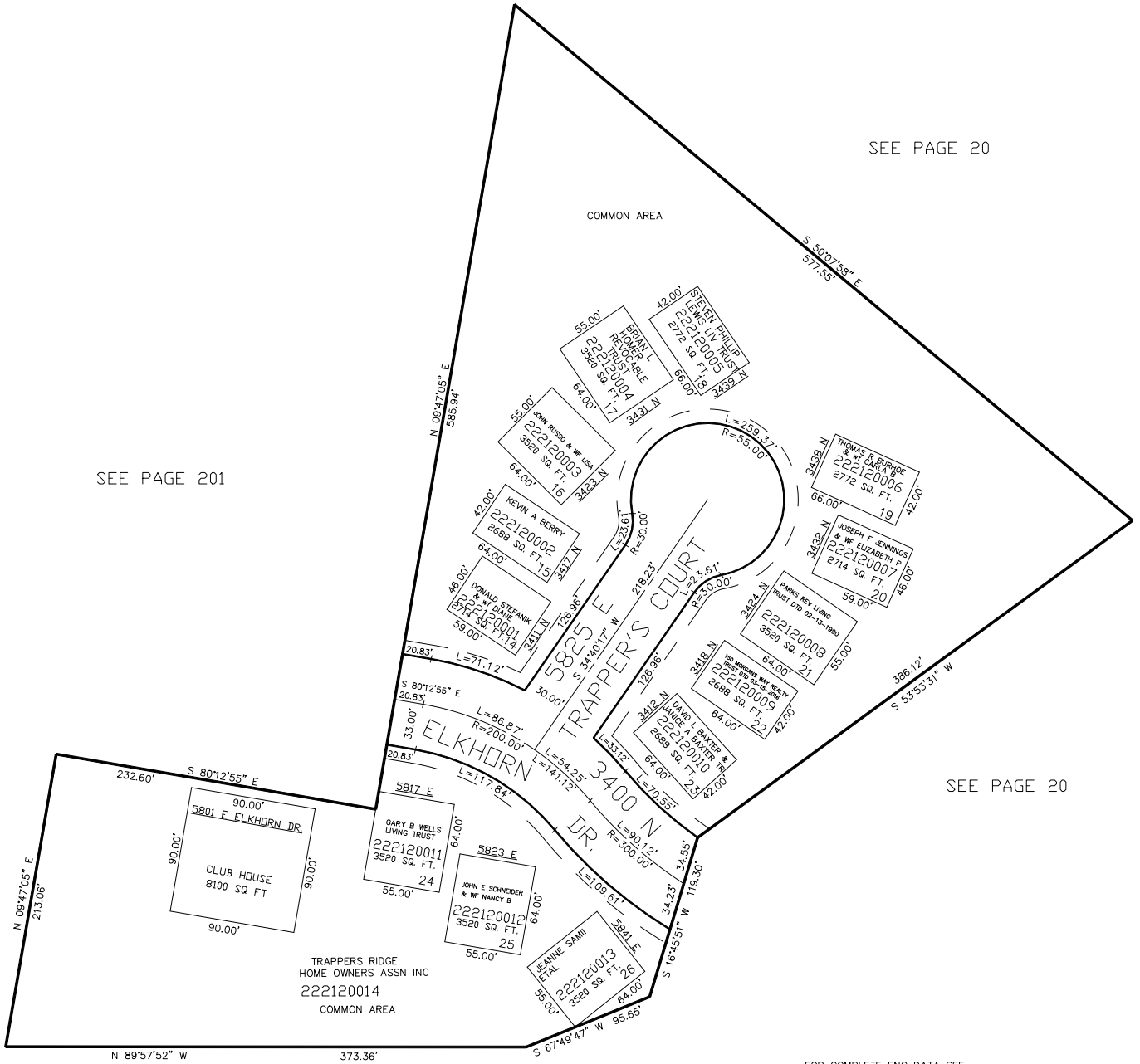
TAXING UNIT: 203

SCALE 1" = 60'

SEE PAGE 20

SEE PAGE 201

SEE PAGE 20



10' UTILITY & DRAINAGE EASEMENTS EACH SIDE OF PROPERTY LINES AS INDICATED BY DASHED LINES EXCEPT AS OTHERWISE SHOWN.

SEE PAGE 20

FOR COMPLETE ENG DATA SEE ORIGINAL DEDICATION PLAT IN BOOK 59, PAGE 24 OF RECORDS.

FOR TAX PURPOSES ONLY